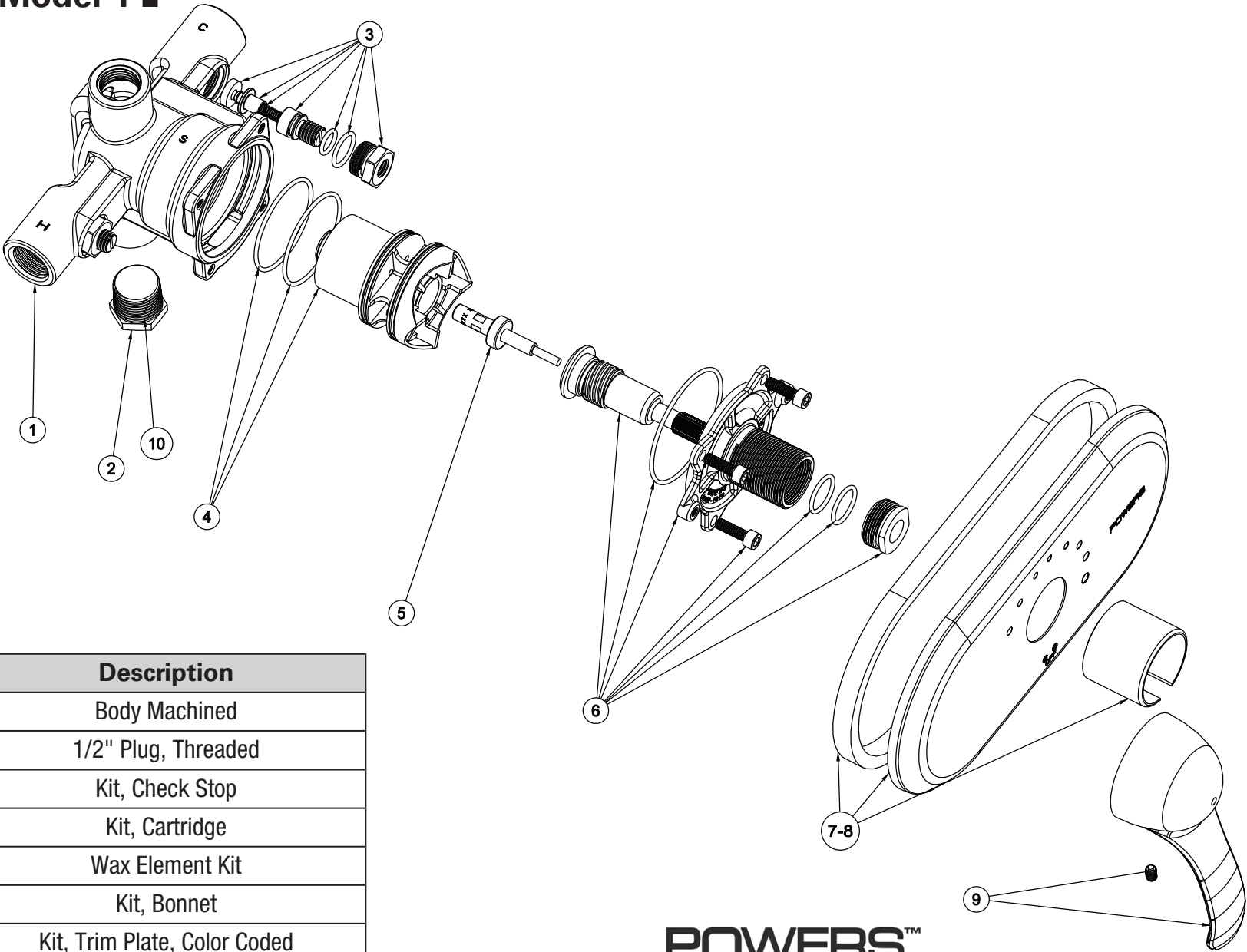


Parts List - E420 Model 1 ■



Index	Part #	Description
1	N/A	Body Machined
2	99903389	1/2" Plug, Threaded
3	99230583	Kit, Check Stop
4	99082161	Kit, Cartridge
5	99065575	Wax Element Kit
6	99521992	Kit, Bonnet
7	99903391	Kit, Trim Plate, Color Coded
8	99524297	Kit, Trim Plate, Etched
9	99461878	Handle Kit, Dome
10	99700371	1/2" Plug, Sweat

POWERS™

ATTENTION INSTALLER: After installation, please leave this Instruction Sheet for occupant's information.
IMPORTANT: Inquire with governing authorities for local installation requirements.

Troubleshooting ■

What to look for if:

The maximum temperature cannot be obtained...

- a. Lime deposits may have accumulated in the hot water pipes, restricting the hot water supply.
- b. The hot water supply temperature may be too low.
- c. The temperature limit stop setting may be too low. Remove valve handle, and readjust the temperature limit stop.

Flow of water is less than desired...

- a. The upstream supply valves may not be fully open.
- b. The inlet supply pressure(s) may be low.
- c. Lime deposits may have accumulated in cartridge, restricting water flow.
- d. The showerhead may be clogged. Remove and clean.
- e. The checkstops may be clogged. Clean check stops.

The valve opens with hot water flow rather than cold water flow...

- a. The inlet water supplies are connected to the wrong ports. Remove the valve and reinstall.

Flow of water is completely shut off...

- a. The upstream supply valves may be completely closed.
- b. The hot or cold water supply pressure may have failed. The HydroGuard® 420 valve is designed to reduce the flow of water upon either supply failure.
- c. The checkstops may be closed. Access the checkstops and open by turning the adjustment screw fully counterclockwise.

**ISO 9001-2008
CERTIFIED**

